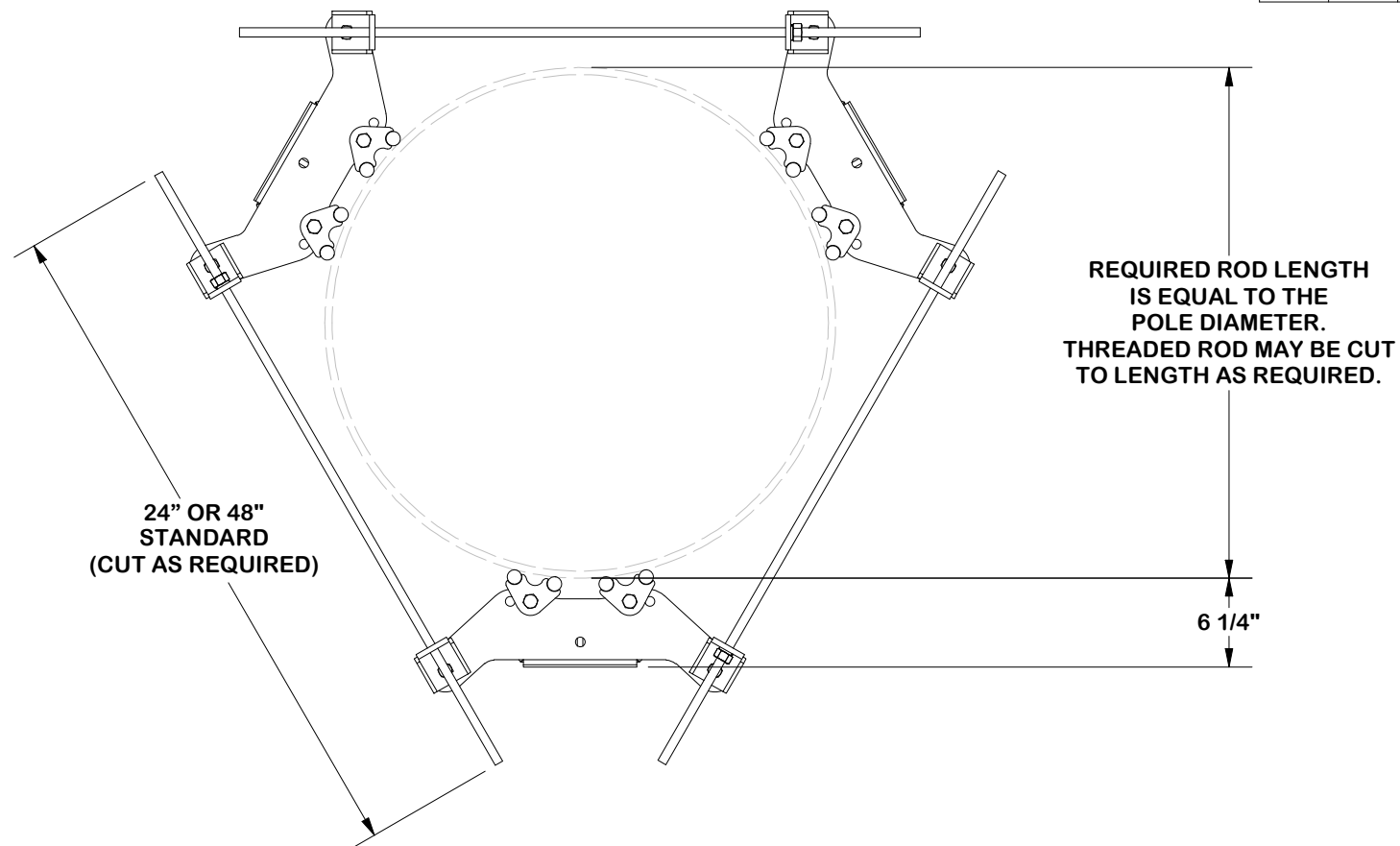
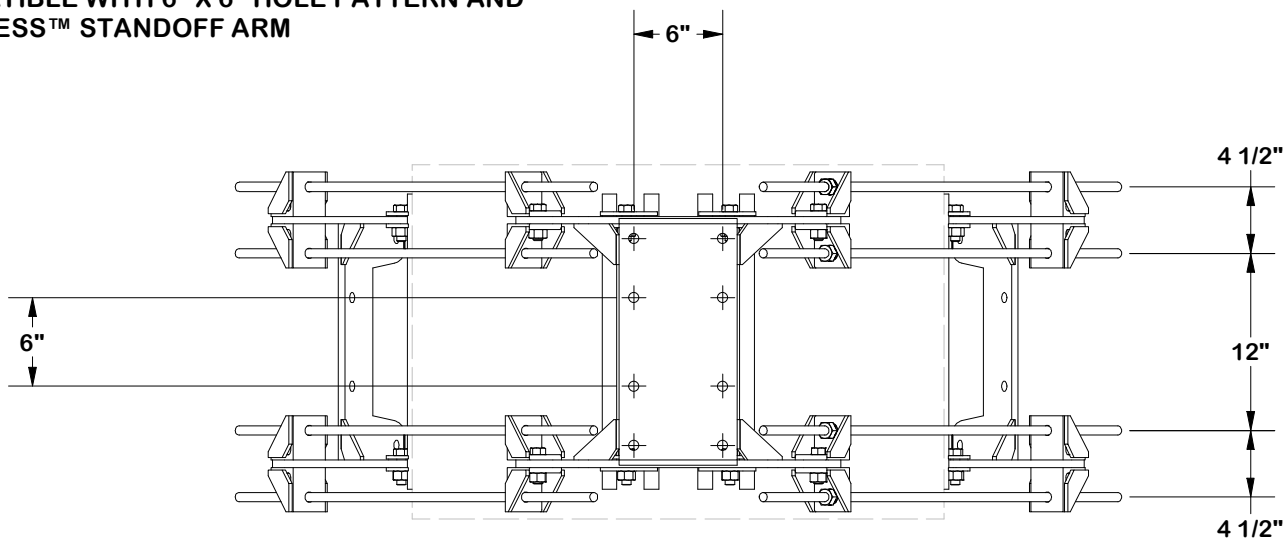


HEAVY STAMP
PART NUMBER

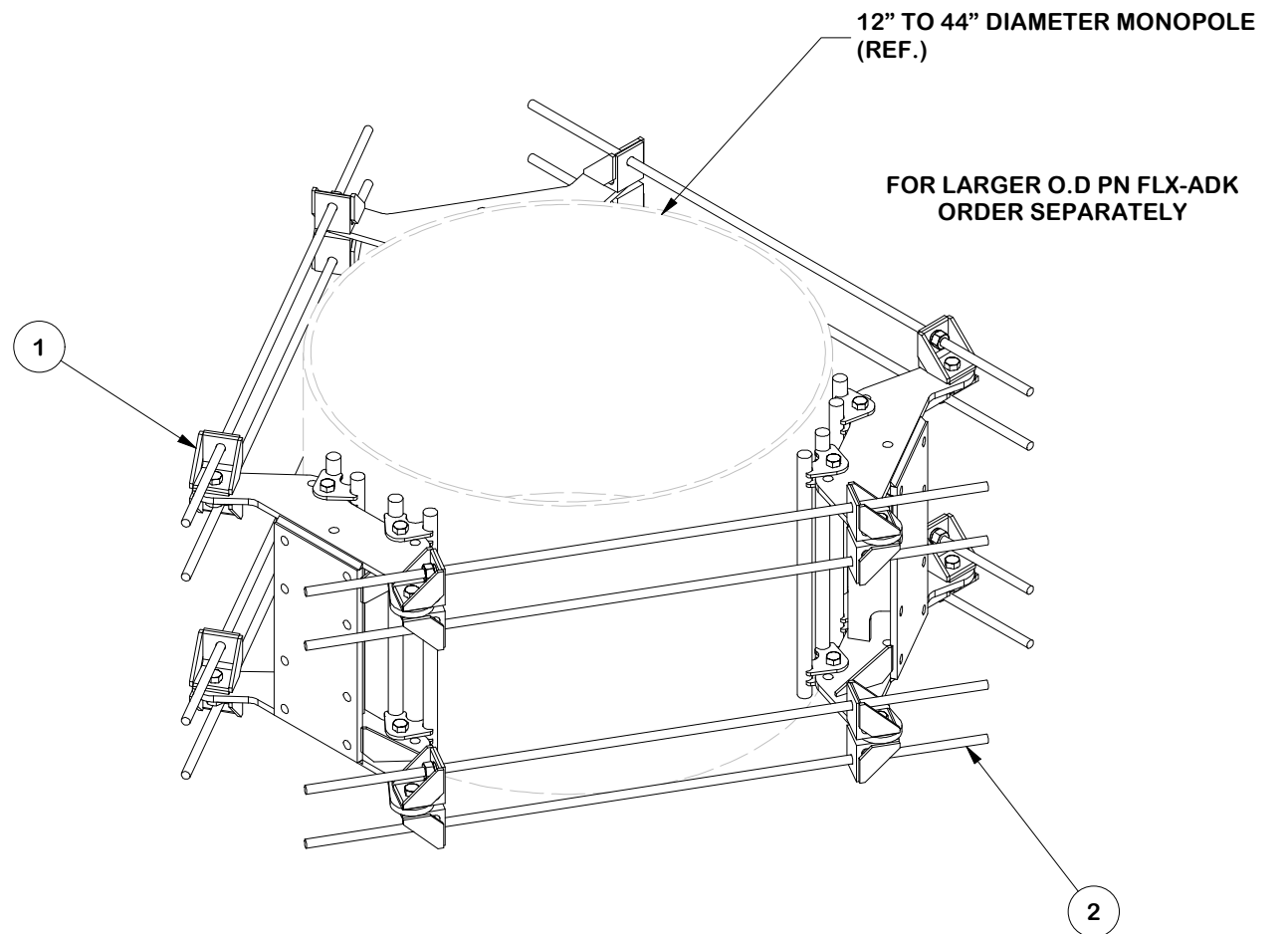
PARTS LIST						
ITEM	QTY	PART NO.	BOX NO.	PART DESCRIPTION	UNIT WT.	NET WT.
1	3	FLX-HDSS	P-FLX-HDSS	FLEXIBLE RING MOUNT HEAVY-DUTY SINGLE SECTOR ASSEMBLY	98.32	294.97
2	3	HDRM-HW	P-HDRM-HW	FLEXIBLE RING MOUNT HARWARE KIT	27.68	83.03
					TOTAL WT. #	378.00




NOTE:
COMPATIBLE WITH 6" X 6" HOLE PATTERN AND
FORTRESS™ STANDOFF ARM

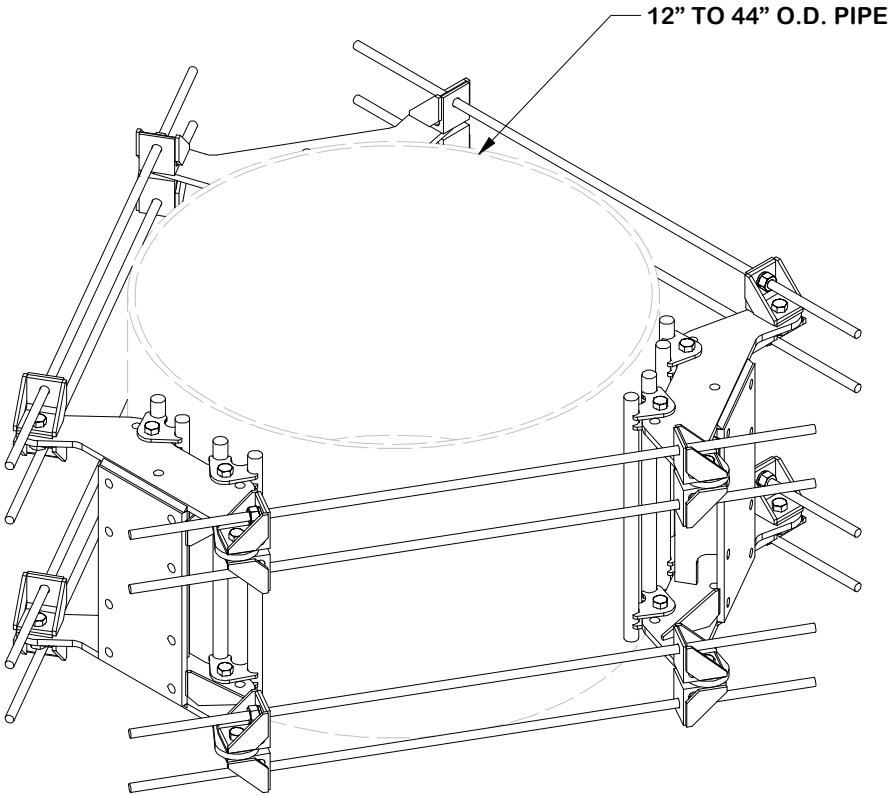
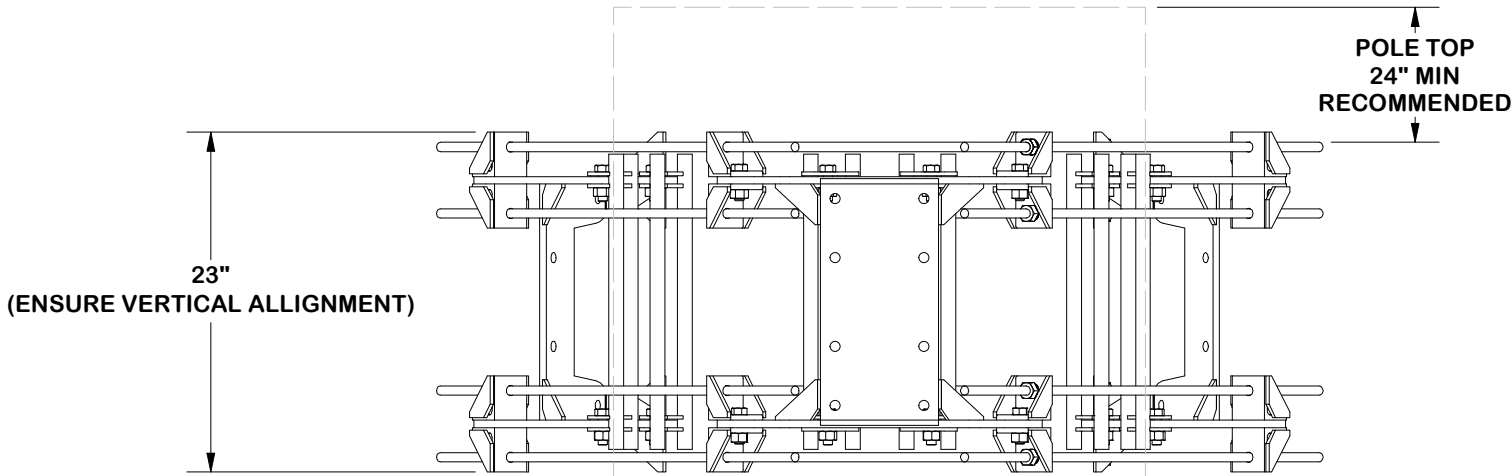
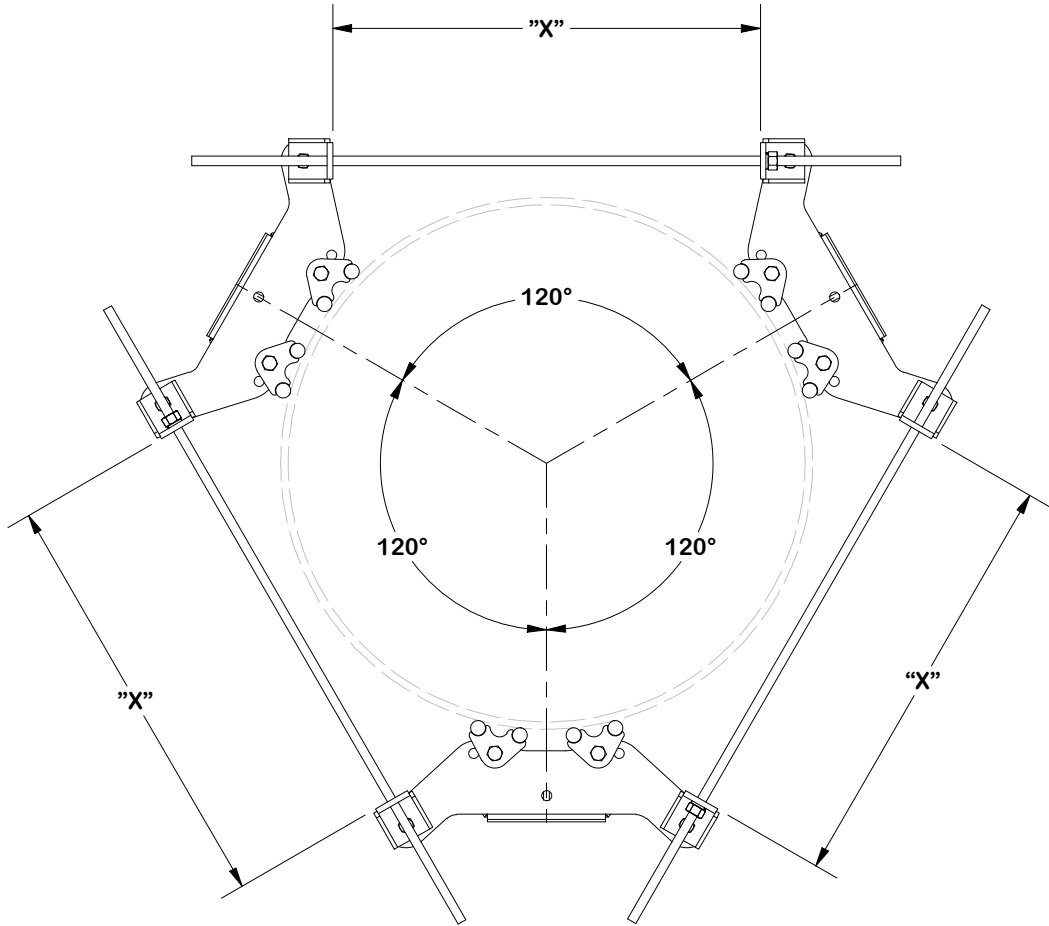



FINISH:
HOT DIP GALVANIZED.



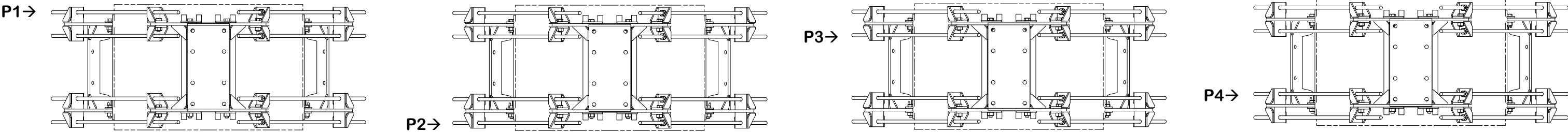
							TOLERANCE NOTES TOLERANCES ON DIMENSIONS, UNLESS OTHERWISE NOTED ARE: SAWED, SHEARED AND GAS CUT EDGES (<i>± 0.030"</i>) DRILLED AND GAS CUT HOLES (<i>± 0.030"</i>) - NO CONING OF HOLES LASER CUT EDGES AND HOLES (<i>± 0.010"</i>) - NO CONING OF HOLES BENDS AND ANGLES ARE ± 1/2 DEGREE ALL OTHER MACHINING (<i>± 0.030"</i>) ALL OTHER ASSEMBLY (<i>± 0.060"</i>)				<div>DESCRIPTION</div> <div>FLEXIBLE RING MOUNT 3-SIDED HEAVY DUTY ASSEMBLY</div>				<div><div><div>SITE PRO 1</div><div>Engineering Support Team: sp1engineering@valmont.com</div></div><div>A valmont  COMPANY</div></div>			
							CPD NO. NCS		DRAWN BY NSP 12/11/2024		ENG. APPROVAL BMC 12/11/2024		PART NO. FLX3-HD		PAGE 1 OF 5			
PATENT INFORMATION: WWW.SITEPRO1.COM/PATENTS		CLASS 87	SUB 02	DRAWING USAGE CUSTOMER	CHECKED BY CSL 12/11/2024	DWG. NO. FLX3-HD												
REVISION HISTORY							PROPRIETARY NOTE: THE DATA AND TECHNIQUES CONTAINED IN THIS DRAWING ARE PROPRIETARY INFORMATION OF VALMONT INDUSTRIES AND CONSIDERED A TRADE SECRET. ANY USE OR DISCLOSURE WITHOUT THE CONSENT OF VALMONT INDUSTRIES IS STRICTLY PROHIBITED.											
A	CHANGED KITS				NCS	NSP	12/12/2024											
REV	DESCRIPTION OF REVISIONS				CPD	BY	DATE											

NOTE:
ENSURE EQUAL DISTANCE
BETWEEN BRACKETS "X"
AND AT 120° APART

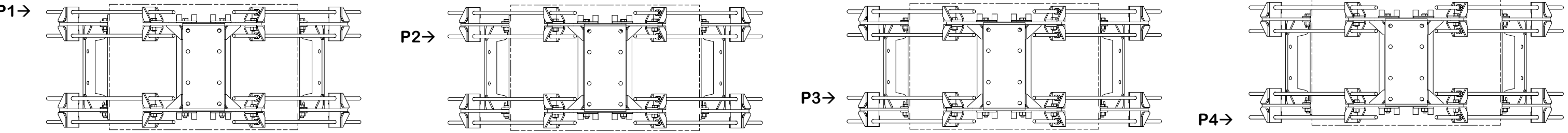


					<div>TOLERANCE NOTES</div> <div>TOLERANCES ON DIMENSIONS, UNLESS OTHERWISE NOTED ARE: SAWED, SHEARED AND GAS CUT EDGES ($\pm 0.030''$) DRILLED AND GAS CUT HOLES ($\pm 0.030''$) - NO CONING OF HOLES LASER CUT EDGES AND HOLES ($\pm 0.010''$) - NO CONING OF HOLES BENDS AND ANGLES ARE $\pm 1/2$ DEGREE ALL OTHER MACHINING ($\pm 0.030''$) ALL OTHER ASSEMBLY ($\pm 0.060''$)</div>					<div>DESCRIPTION</div> <div>FLEXIBLE RING MOUNT 3-SIDED HEAVY DUTY ASSEMBLY</div>					<div><div><div>SITE PRO</div><div>1</div></div><div>Engineering Support Team: sp1engineering@valmont.com</div></div> <div>A valmont  COMPANY</div>						
A	CHANGED KITS				NCS	NSP	12/12/2024	PATENT INFORMATION: WWW.SITEPRO1.COM/PATENTS					CPD NO. NCS		DRAWN BY NSP 12/11/2024		ENG. APPROVAL BMC 12/11/2024		PART NO. FLX3-HD		2 OF 5 PAGE
REV	DESCRIPTION OF REVISIONS				CPD	BY	DATE	PROPRIETARY NOTE: THE DATA AND TECHNIQUES CONTAINED IN THIS DRAWING ARE PROPRIETARY INFORMATION OF VALMONT INDUSTRIES AND CONSIDERED A TRADE SECRET. ANY USE OR DISCLOSURE WITHOUT THE CONSENT OF VALMONT INDUSTRIES IS STRICTLY PROHIBITED.					CLASS 87	SUB 02	DRAWING USAGE CUSTOMER		CHECKED BY CSL 12/11/2024		DWG. NO. FLX3-HD		
REVISION HISTORY																					

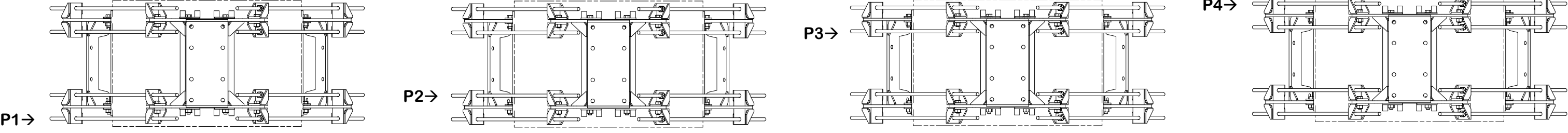
INSTALL ORDER



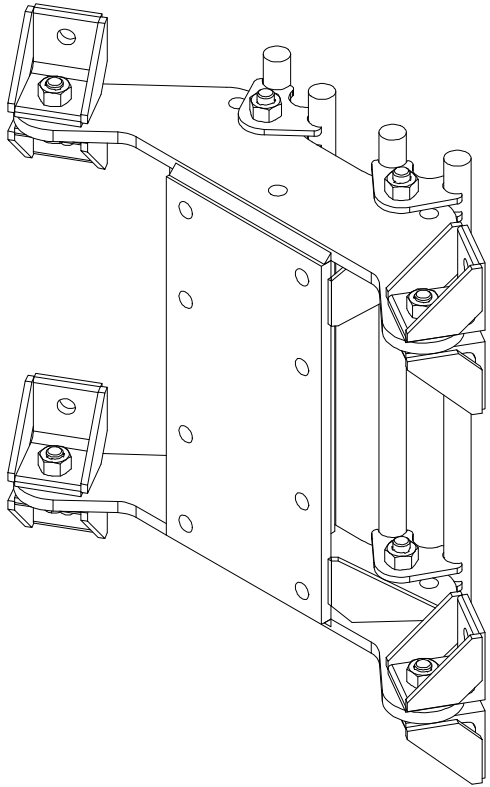
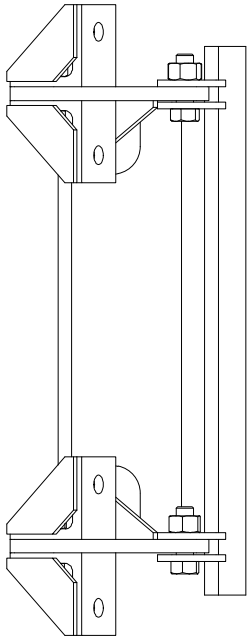
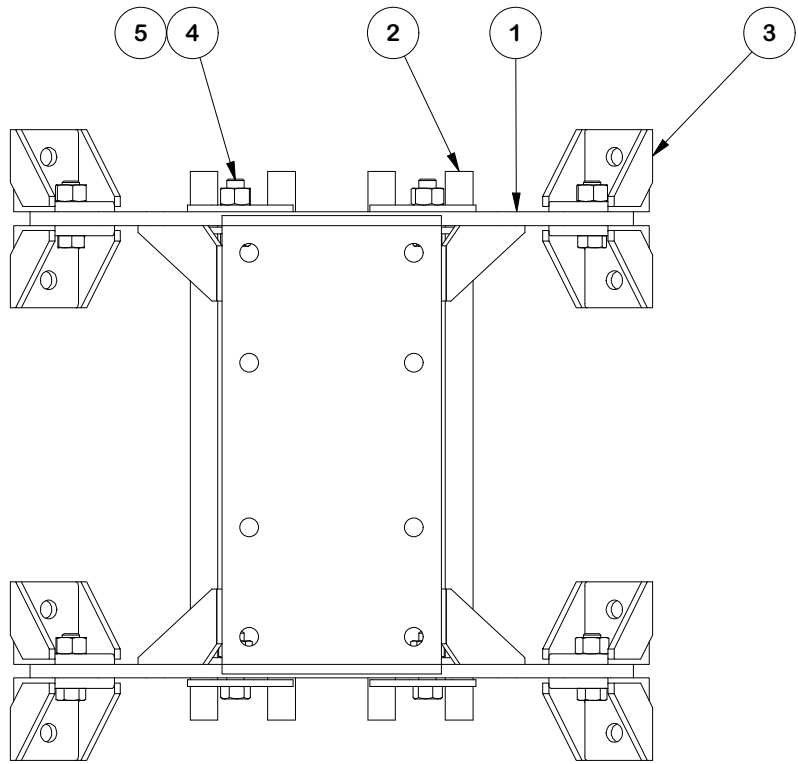
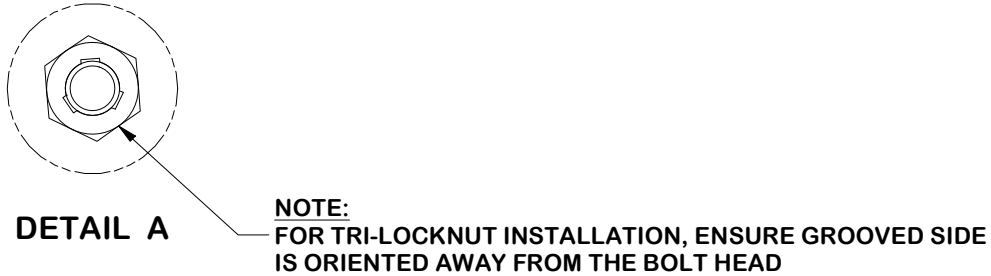
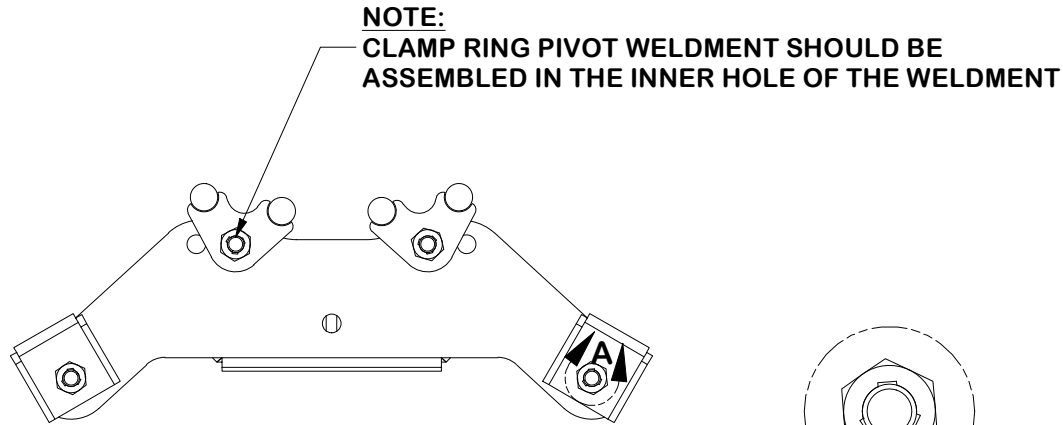
INITIAL TIGHTENING



FINAL TIGHTENING



					TOLERANCE NOTES	DESCRIPTION			SITE PRO 1		Engineering Support Team: sp1engineering@valmont.com	
					TOLERANCES ON DIMENSIONS, UNLESS OTHERWISE NOTED ARE: SAWED, SHEARED AND GAS CUT EDGES (± 0.030") DRILLED AND GAS CUT HOLES (± 0.030") - NO CONING OF HOLES LASER CUT EDGES AND HOLES (± 0.010") - NO CONING OF HOLES BENDS AND ANGLES ARE ± 1/2 DEGREE ALL OTHER MACHINING (± 0.030") ALL OTHER ASSEMBLY (± 0.060")	FLEXIBLE RING MOUNT 3-SIDED HEAVY DUTY ASSEMBLY			A valmont COMPANY			
A	CHANGED KITS	NCS	NSP	12/12/2024	PATENT INFORMATION: WWW.SITEPRO1.COM/PATENTS	CPD NO.	DRAWN BY	ENG. APPROVAL	PART NO.			
REV	DESCRIPTION OF REVISIONS	CPD	BY	DATE	PROPRIETARY NOTE: THE DATA AND TECHNIQUES CONTAINED IN THIS DRAWING ARE PROPRIETARY INFORMATION OF VALMONT INDUSTRIES AND CONSIDERED A TRADE SECRET. ANY USE OR DISCLOSURE WITHOUT THE CONSENT OF VALMONT INDUSTRIES IS STRICTLY PROHIBITED.	NCS	NSP 12/11/2024	BMC 12/11/2024	FLX3-HD			
REVISION HISTORY						CLASS	SUB	DRAWING USAGE	CHECKED BY	DWG. NO.		
						87	02	CUSTOMER	CSL 12/11/2024	FLX3-HD		



PARTS LIST					
ITEM	QTY	PART NO.	PART DESCRIPTION	UNIT WT.	NET WT.
1	1	X-CR-HDW	HEAVY FLEXIBLE RING MOUNT	55.25	55.25
2	2	X-CR-PW20	20" CLAMP RING PIVOT WELDMENT	11.12	22.25
3	8	X-CR-AGW	ANGLE ON WELDMENT	2.20	17.57
4	8	G5802	5/8" x 2" HDG HEX BOLT GR5	0.27	2.16
5	8	G58TRI-LNUT	5/8" HDG HEAVY 2H TRI-LOCK NUT	0.14	1.10
TOTAL WT. #					98.32

FINISH:
HOT DIP GALVANIZED.

TOLERANCE NOTES

TOLERANCES ON DIMENSIONS, UNLESS OTHERWISE NOTED ARE:
SAWED, SHEARED AND GAS CUT EDGES ($\pm 0.030"$)
DRILLED AND GAS CUT HOLES ($\pm 0.030"$) - NO CONING OF HOLES
LASER CUT EDGES AND HOLES ($\pm 0.010"$) - NO CONING OF HOLES
BENDS AND ANGLES ARE $\pm 1/2$ DEGREE
ALL OTHER MACHINING ($\pm 0.030"$)
ALL OTHER ASSEMBLY ($\pm 0.060"$)

PATENT INFORMATION: WWW.SITEPRO1.COM/PATENTS

PROPRIETARY NOTE:
THE DATA AND TECHNIQUES CONTAINED IN THIS DRAWING ARE PROPRIETARY INFORMATION OF VALMONT INDUSTRIES AND CONSIDERED A TRADE SECRET. ANY USE OR DISCLOSURE WITHOUT THE CONSENT OF VALMONT INDUSTRIES IS STRICTLY PROHIBITED.

DESCRIPTION

**FLEXIBLE RING MOUNT
3-SIDED HEAVY DUTY ASSEMBLY**

CPD NO. NCS		DRAWN BY NSP 12/11/2024	ENG. APPROVAL BMC 12/11/2024
CLASS 87	SUB 02	DRAWING USAGE CUSTOMER	CHECKED BY CSL 12/11/2024

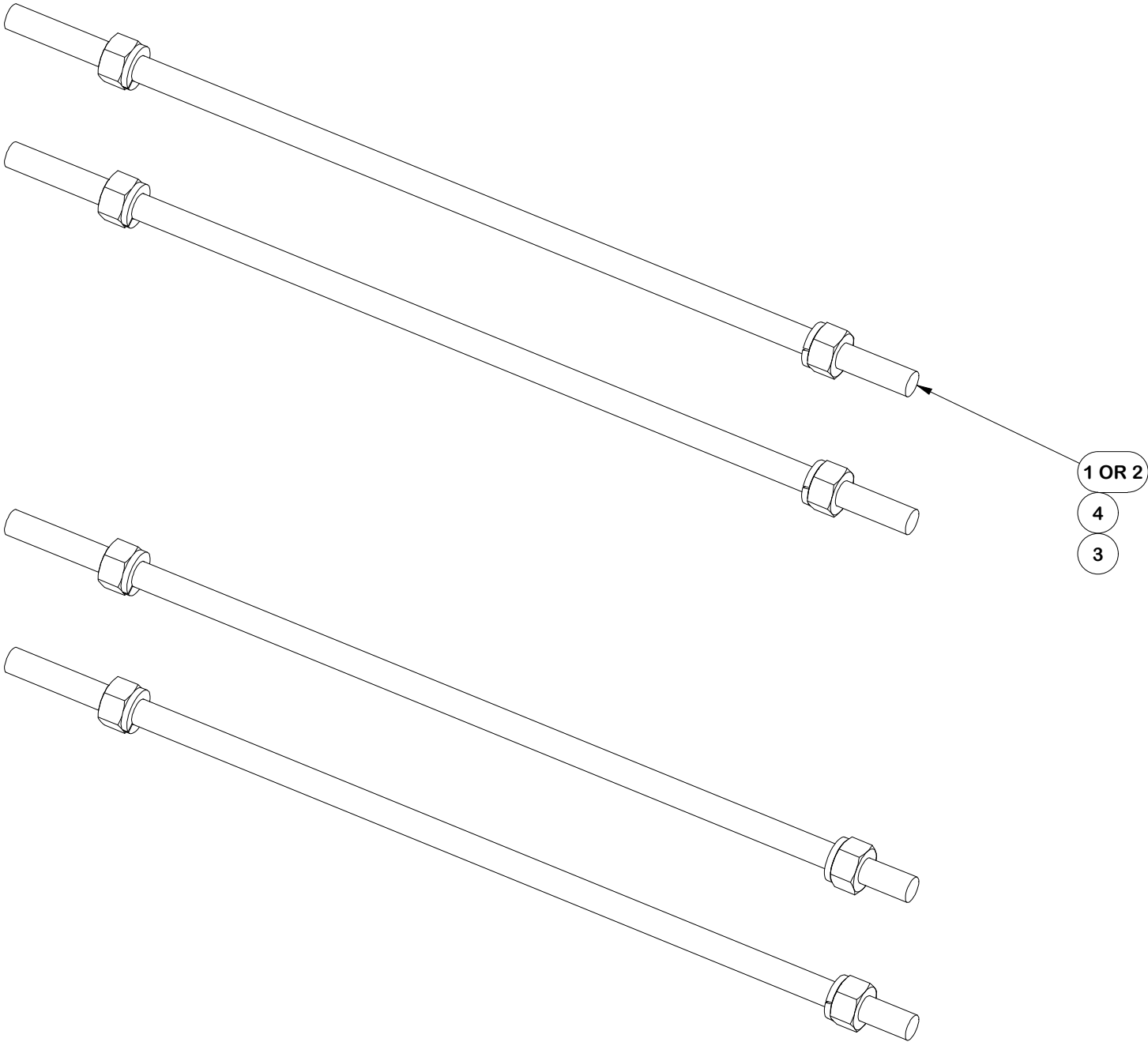
SITE PRO 1

A **valmont** COMPANY

Engineering
Support Team:
sp1engineering@valmont.com

PART NO. FLX-HDSS	PAGE 4 OF 5
DWG. NO. FLX3-HD	

PARTS LIST					
ITEM	QTY	PART NO.	PART DESCRIPTION	UNIT WT.	NET WT.
1	4	G58R-48	5/8" X 48" GALV THREADED ROD	4.39	17.56
2	4	G58R-24	5/8" X 24" THREADED ROD (HDG.)	2.22	8.87
3	8	G58LW	5/8" HDG LOCKWASHER	0.03	0.21
4	8	G58NUT	5/8" HDG HEAVY 2H HEX NUT	0.13	1.04
TOTAL WT. #					28.30



FINISH:
HOT DIP GALVANIZED.

	<div>TOLERANCE NOTES</div> <div>TOLERANCES ON DIMENSIONS, UNLESS OTHERWISE NOTED ARE: SAWED, SHEARED AND GAS CUT EDGES (± 0.030") DRILLED AND GAS CUT HOLES (± 0.030") - NO CONING OF HOLES LASER CUT EDGES AND HOLES (± 0.010") - NO CONING OF HOLES BENDS AND ANGLES ARE ± 1/2 DEGREE ALL OTHER MACHINING (± 0.030") ALL OTHER ASSEMBLY (± 0.060")</div>			<div>DESCRIPTION</div> <div>FLEXIBLE RING MOUNT 3-SIDED HEAVY DUTY ASSEMBLY</div>			<div><div><div>SITE PRO 1</div><div>A valmont COMPANY</div></div><div>Engineering Support Team: sp1engineering@valmont.com</div></div>		
	PATENT INFORMATION: WWW.SITEPRO1.COM/PATENTS			CPD NO. NCS	DRAWN BY NSP 12/11/2024	ENG. APPROVAL BMC 12/11/2024	PART NO. HDRM-HW	PAGE 5 OF 5	
	PROPRIETARY NOTE: THE DATA AND TECHNIQUES CONTAINED IN THIS DRAWING ARE PROPRIETARY INFORMATION OF VALMONT INDUSTRIES AND CONSIDERED A TRADE SECRET. ANY USE OR DISCLOSURE WITHOUT THE CONSENT OF VALMONT INDUSTRIES IS STRICTLY PROHIBITED.			CLASS 87	SUB 02	DRAWING USAGE CUSTOMER	CHECKED BY CSL 12/11/2024		DWG. NO. FLX3-HD